

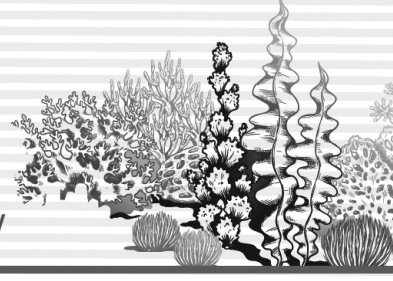


2023 International Symposium and the 37th Annual Meeting of the Korean Society of Phycology Program

Nov. 2 (Thu) ~ 3 (Fri) / Sono Calm Yeosu, Korea

Nov. 2. Thursday				
Time	Grand Ballroom (1F)	Sapphire I (2F)	Sapphire II (2F)	Sapphire III (2F)
12:00~13:00	Registration			
13:00~13:30	Opening			
13:30~14:20	Plenary Lecture I Shan Lu (Nanjing University)			
14:20~14:30	B r e a k			
14:30~15:30	Yong Scientist Award Competition			
15:30~15:50	B r e a k			
15:30~17:05	Student Presentation I	Student Presentation II	Student Presentation III	Contributed Papers I
17:05~18:00	Poster Session			
18:00~18:30	Chunhae Special Lecture Mi Sook Hwang			
18:30~ 20:30	Banquet	Student night		

Nov. 3. Friday				
Time	Grand Ballroom (1F)	Sapphire I (2F)	Sapphire II (2F)	Sapphire III (2F)
08:30~09:00	Registration			
09:00~09:50	Plenary Lecture II Paul Dobbins (WWF-USA)			
09:50~10:10	B r e a k			
10:10~11:25	Special Session I (Seaweed for climate mitigation and the food of the future)	Special Session II (조류 대발생 연구 현황과 발전 방안)	Student Presentation IV	Student Presentation V
11:25~11:55	Contributed Papers II	Contributed Papers III		Contributed Papers IV
12:00~13:30	평의원회	L u n c h		
13:30~14:30	Special Session III (Algae cell signaling and genomics)	Special Session IV (담수 미세조류 계통분류 및 유용성 연구)	Special Session V (연안생태계 복원성과 및 활용방안)	Contributed Papers IV
14:30~15:00				
15:00~15:30	KSP Annual Business Meeting and Awards Ceremony			



발표일정 (Program)

Nov. 2. Thursday

Plenary Lecture	Grand Ballroom (1F) Chair: Jang Kyun Kim
------------------------	---

13:30-14:20	PL-01	Carotenoid metabolism of <i>Porphyra sensu lato</i> Lien Yang, Yinyin Deng, Tianjun Cao, Yuanyuan Hui, Dexin Lv, <u>Shan Lu</u>
-------------	-------	--

Yong Scientist Award Competition AO-I	Grand Ballroom (1F) Chair: Ji Hwan Kim
---	---

14:30-14:45	AO-01	Taxonomy of the genus <i>Poteriochromonas</i> (Chrysophyceae) based on morphological and molecular evidence <u>Minseok Jeong</u> , Jong Im Kim, Woongghi Shin
14:45-15:00	AO-02	전장유전체 발현분석을 이용한 방사무늬김의 스트레스 대응유전자 규명 김용택, 김광훈
15:00-15:15	AO-03	Wastewater toxicity assessment utilizing <i>Ulva australis</i> bioassay and AiWA model <u>Hojun Lee</u> , Duc-Viet Nguyen, Soyeon Choi, Hyunju Cho, Di Wu, Taejun Han, Jihae Park
15:15-15:30	AO-04	2022년 춘계와 하계 제주 사질 조건대 표선 해변에 서식하는 저서 와편모조류 군집 연구 강수민, 장지연, 정도윤, 왕욱, 이준백, 김진호

Student Presentation I SO-I	Grand Ballroom (1F) Chair: Yongsung Lee
---------------------------------------	--

15:50-16:05	SO I-01	착편모조류에서의 유전자군 획득 및 상실 <u>이용성</u> , 하지산, 윤환수
16:05-16:20	SO I-02	Taxonomic reassessment of the genus <i>Laurencia</i> (Ceramiales, Rhodophyta) from Korea, using <i>rbcl</i> and COI-5P genes <u>Prismabella Wilis Andiska</u> , Myung Sook Kim
16:20-16:35	SO I-03	Population divergence among individual of <i>Ditylum brightwellii</i> (Bacillariophyceae) in Korean coastal waters <u>A-Yeong Tak</u> , JunMo Lee
16:35-16:50	SO I-04	Two New Records of <i>Chondrophycus</i> Species (Rhodomelaceae, Rhodophyta) in Korea, based on Molecular and Morphological Analyses <u>Paola Romero-Orozco</u> , Boo Yeon Won, Tae Oh Cho
16:50-17:05	SO I-05	Genomic Insights into Ceramiales: Structural and Sequence Variations in Mitochondrial Genomes <u>MinHo Seo</u> , Hwan Su Yoon, JiHoon Jo



Student Presentation II Sapphire I (2F)
SO-II Chair: Hana Park

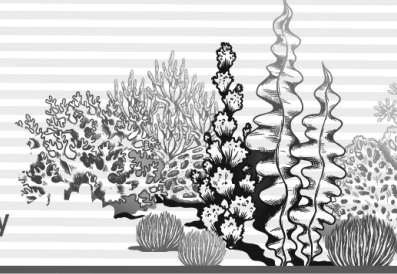
15:50-16:05	SO II-01	홍조식물 <i>Bangia sp.</i> 의 단포자 운동과 분자적 메커니즘 <u>김수연, 김광훈</u>
16:05-16:20	SO II-02	메카노센싱 칼슘 멤브레인 프로틴을 통한 방사무늬 김 포자의 정착 신호전달기작 연구 <u>김신양, 김광훈, 황동수</u>
16:20-16:35	SO II-03	광량 차이에 따른 홍조 미끌도박(<i>Grateloupia turuturu</i>)의 생물학적 특성 변화 <u>송영준, 김영식</u>
16:35-16:50	SO II-04	Influence of temperature variation on saxitoxins (STXs) biosynthesis in toxic dinoflagellate <i>Alexandrium</i> in the Korean coasts <u>Hansol Kim, Thi Nhu Quynh Bui, Jeongmin Shin, Jang-Seu Ki</u>
16:50-17:05	SO II-05	남균성 병원균에 대한 방사무늬김의 방어기작 <u>박하나, 김광훈</u>

Student Presentation III Sapphire II (2F)
SO-III Chair: Jae Woo Jung

15:50-16:05	SO III-01	Effect of intermittent aeration and stocking density on bioremediation of <i>Chondrus ocellatus</i> in <i>Hyporthodus septemfasciatus</i> effluent <u>Sookkyung Shin, Ji-Sook Park, Qikun Xing, Namjoo Jung, Dongwoo Kim, Meyoungil Kim, Ja Gein Koo, Jang K. Kim</u>
16:05-16:20	SO III-02	Ecological Insights from Planktonic Protists in the Jeju Strait: Diversity, assembly process, and Co-existence Patterns <u>Juhee Min, Kwang Young Kim</u>
16:20-16:35	SO III-03	Study on the adhesion of <i>Undaria pinnatifida</i> (Alariaceae, Phaeophyceae) PDAFs under Bacterial Co-Cultivation <u>Dong Jin Kim, Boo Yeon Won, Tae Oh Cho</u>
16:35-16:50	SO III-04	포항 삼정리 해역 보라성게(<i>Heliocidaris crassispina</i>)와 둥근성게(<i>Mesocentrotus nudus</i>)의 분포 및 영양 단계 <u>한승엽, 신동훈, 김수연, 박세정, 서지혜, 최창근</u>
16:50-17:05	SO III-05	Potential carbon absorption and storage of salt marsh ecosystems in Incheon <u>Jeonghwa Hwang, Ji-Sook Park, Jang K. Kim</u>

Contributed Papers I Sapphire III (2F)
CO-I Chair: Jang-Seu Ki

15:50-16:05	CO I-01	Global diversification and biogeography of <i>Gelidiella acerosa</i> complex (Gelidiales, Rhodophyta) based on organellar genome analysis <u>Ga Hun Boo, Hwan Su Yoon</u>
16:05-16:20	CO I-02	Untangling the peacock's tail: Species diversity, taxonomy and origins of the economically valuable brown alga Padina (Dicyotales Phaeophyceae) in Korea <u>Christophe Vieira, Manon Daudinet, Myung Sook Kim</u>
16:20-16:35	CO I-03	A remarkable mitochondrial genome of Photosynthetic euglenoid <i>Euglena mutabilis</i> <u>Jong Im Kim, Minseok Jeong, Michael W. Gray, John M. Archibald, Woongghi Shin</u>
16:35-16:50	CO I-04	Redox regulation in Paulinella plastids evolved independently from plant plastids <u>Duckhyun Lhee, Hwan Su Yoon</u>
16:50-17:05	CO I-05	Genetic diversity and structure of <i>Undaria pinnatifida</i> populations in China and their genetic relationship with those from other countries <u>Hangil Choi, Tifeng Shan, Yuqian Li, Shaojun Pang</u>



Poster Session (17:05–18:00)

Grand Ballroom (1F)

PA. Taxonomy & Evolution

17:05–18:00	PA-01	우리나라 해조류의 다양성 김경미, 광민석, 장형석, 고영호
	PA-02	First record of cylindrical <i>Dipterocladia</i> (Ceramiales, Delesseriaceae) with a new species, <i>D. cylindrica</i> , from Korea based on morphological and molecular analyses Jeong Chan Kang, Mi Yeon Yang, Min Seob Kim, Myung Sook Kim
	PA-03	Unrevealing species diversity of epi-endophytic green algal genus <i>Ulvella</i> (Ulvales, Chlorophyta) in Korea. Su Yeon Kim, Eun Chan Yang, Myung sook Kim
	PA-04	고대 저수지 공검지의 홀로세(Holocene) 퇴적층에 분포하는 국내 미기록 돌말류 보고 이상득, 이창수, 윤석민, 박미례, 권대률, 이진영, 이호일
	PA-05	Taxonomic revision of <i>Porphyra corallicola</i> for transfer to the genus <i>Bangia</i> based on gametophytic specimens from east coast of Korea Young Ho Koh, Kyunghwa Baek, Kyeong Mi Kim
	PA-06	A candidate new Antarctic species within the genus <i>Ixipapillifera</i> (Chlorophyceae, Chlorophyta) Hyunsik Chae, Eun Jae Kim, Han Soon Kim, Han-Gu Choi, Sanghee Kim, Ji Hee Kim
	PA-07	Morphology, phylogeny, and host range of a novel <i>Marinomyxa</i> -like parasitoid infecting marine dinoflagellates yeseul Jeong, Boo Seong Jeon, Myung Gil Park
	PA-08	국립해양생물자원관 해조류 표본 관리 현황 김소희, 김주희, 정현경, 광민석
	PA-09	A new record of high temperature tolerance species, <i>Pyropia kitoi</i> com. nov. (Bangiaceae, Rhodophyta), from Korea Dong Jin Kim, Paola Romero-Orozco, Gwan Wong Kim, Seong Hyeon Baek, Tae Oh Cho, Boo Yeon Won
	PA-10	Two New Records of <i>Laurencia decussata</i> and <i>L. pacifica</i> from Korea Paola Romero-Orozco, Boo Yeon Won, Tae Oh Cho
	PA-11	A new record of <i>Lithophyllumneo-okamurae</i> (Corallinales, Rhodophyta) in Korea based on molecular and morphological analyses Gwan Woung Kim, Boo Yeon Won, Tae Oh Cho
	PA-12	Morphology and molecular phylogeny of a novel parasitoid, <i>Pseudopirsonia chaetoceri</i> n. sp. (Imbricatea, Cercozoa) infecting the marine diatom <i>Chaetoceros</i> species (Mediophyceae, Bacillariophyta) Kyoungwon Cho, Sunju Kim
	PA-13	<i>Stenomitos terricola</i> sp. nov. (Leptolyngbyaceae, Cyanobacteria) from the moist soil of Mt. Gwanggyo, Republic of Korea Nam-Ju Lee, Do-Hyun Kim, Ok-Min Lee
	PA-14	Comparative mitochondrial genomics of Synuralean algae (Chrysophyceae) Nayoung Lee, Jong Im Kim, Woongghi Shin
	PA-15	The genome study of Eustigmatophyceae YuJin Jeong, Eun Hee Bae, JunMo Lee



Poster Session (17:05–18:00)
PB. Physiology & Genetics

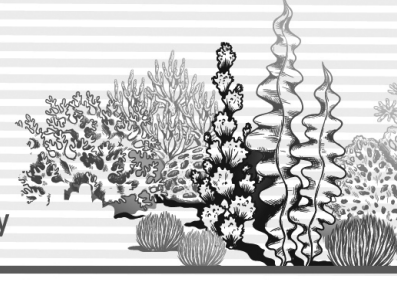
Grand Ballroom (1F)

17:05–18:00	PB-01	녹조식물 매생이(<i>Capsosiphon fulvescens</i>)의 생활사를 이용한 인공종자 생산기술개발 이지웅, 유현일, 김승오, 황은경, 황미숙
	PB-02	Unraveling dopamine production in <i>Micractinium</i> and its ecological role in the Antarctic ecosystem <u>Sung Mi Cho</u> , Seung Chul Shin, Jeongha So, Jong Hee Kim, Sanghee Kim
	PB-03	Enhancing Lipid and Carotenoid Productivity in the Indigenous Microalga <i>Deasonia</i> sp. KNUA218 from Dokdo Island Using DYV Medium <u>Ho-Seong Suh</u> , Jeong-Mi Do, Bo-Seong Kim, Yu-Hee Seo, Jin-Won Lee, Ho-Sung Yoon, Hae-Seo No
	PB-04	A novel saxitoxin biosynthesis gene <i>sxtB</i> identified from the toxic marine dinoflagellate <i>Alexandrium catenella</i> <u>Hansol Kim</u> , Thi Nhu Quynh Bui, Jang-Seu Ki
	PB-05	Immune resistance through regulation of enzyme expression involved in the cellulose biosynthesis process of the red alga <i>Dasysiphonia japonica</i> <u>Xianying Wen</u> , Gwang Hoon Kim
	PB-06	김 녹반병 원인균 PyroV1 바이러스의 동결 보존과 감염 특성에 대한 항생제 처리의 영향 송애현, 박하나, 김광훈
	PB-07	한국산 붉은갯병균(<i>Pythium porphyrae</i>)의 지역 개체군 생활사와 감염 특성 오연주, 박하나, 김광훈
	PB-08	김 냉동망 처리 중 건조율이 세포 생존율 향상과 질병 감염 억제에 미치는 영향 강동우, 김광훈, 박하나
	PB-09	Antarctic microalgae are shown to enhance the freezing tolerance by cold acclimation like plants <u>Jong Hee Kim</u> , Jeongha So, Sanghee Kim, Sung Mi Cho
	PB-10	Thermal stress tolerance in diverse marine phytoplankton <u>SeoYeon Baek</u> , JunMo Lee
	PB-11	질소 결핍 배지를 활용한 피떡말 (<i>Porphyridium purpureum</i>)의 lipid 생산 유도 김남현, 김광훈, 김수연
	PB-12	Effects of nitrate concentration on physiological and molecular changes in marine dinoflagellate <i>Prorocentrum minimum</i> <u>Hansol Kim</u> , Abassi Sofia, Jang-Seu Ki
	PB-13	Effects of light quality on the germination and early development of sporophyte of <i>Saccharina japonica</i> <u>Ho-Hyeon Lee</u> , Jang Kyun Kim, Ji-Sook Park, Qikun Xing
	PB-14	홍조식물 <i>Bostrychia mortiziana</i> 의 포자형태 분화과정 중 활성산소종 (ROS) 신호 심은영, 최유정, 박하나, 김광훈
	PB-15	홍조식물 <i>Bostrychia moritziana</i> 에서 성 특이적으로 발현하는 유전자의 규명 심은영, 차옥경, 이호립, 김광훈
	PB-16	Response of carotenoid metabolism of <i>Neopyropia haitanensis</i> to mild high-light irradiation <u>Dexin Lv</u> , Shuyuan Song, Kui Li, Shan Lu

Poster Session (17:05–18:00)
PC. Ecology

Grand Ballroom (1F)

17:05–18:00	PC-01	Daily interactions between the parasitoid <i>Parvilucifera</i> (Alveolata, Perkinsozoa) and dinoflagellate hosts <u>Boo Seong Jeon</u> , Myung Gil Park
-------------	-------	--



Poster Session (17:05–18:00) Grand Ballroom (1F)
 PC. Ecology

17:05–18:00	PC-02	Diversity and niche differentiation of the <i>Amoebophrya</i> and <i>Parvilucifera</i> infecting harmful dinoflagellates in Jinhae Bay <u>Bora Lee</u> , Boo Seong Jeon, Myung Gil Park
	PC-03	Succession pattern of macroalgal assemblage on scraped-down substrata in the intertidal Sargassum bed of Jeju Island <u>Jong Chul Lee</u> , Jeong Chan Kang, Mi Yeon Yang, Eungyu Han, Yonghyun Jwa, Myung Sook
	PC-04	Distribution analysis and functional dynamics of Phycodnavirus community in the South sea of Korea <u>Minseok Kwak</u> , Hyeon Gyeong Jeong, Gwang Hoon Kim
	PC-05	Interannual variation of macroalgal flora and community structure in the subtidal rocky shore of Sagye, Jeju Island, Korea <u>Bo Yeon Kim</u> , Jun-Cheol Ko, Song-Hun Han, Seung-Jong Lee
	PC-06	담수 돌말류의 세포 부피로부터 유기탄소 함량 추정 방법론 박채홍, 이상득
	PC-07	아미노산 안정동위원소를 활용한 구미보 출현 유해 남조류의 발생 기원 추적 연구 이상득, 김도균, 박미례, 권대률, 윤석민, 김지환, 이창수
	PC-08	Glacial retreat hinders development of Antarctic subtidal macroalgal assemblage <u>Young Wook Ko</u> , Dong Seok Lee, Jeong Ha Kim, Sun-Yong Ha, Sanghee Kim, Han-Gu Choi
	PC-09	Seasonal comparison between turf algal community structure and net community production (NCP) in the Pohang subtidal ecosystem <u>Eun Jin Choi</u> , Hyun Jeong Kim, Yun Woo Lee, Eun Ju Kang, Hyung Woo Lee, Ju-Hyoung Kim
	PC-10	Genetic diversity of <i>Corallina</i> (Coralinales, Rhodophyta) in Korea and population dynamics of <i>C. berteri</i> based on <i>cox1</i> <u>Yeong Chae Yoo</u> , Ga Yeong Jeon, Eun Chan Yang
	PC-11	춘계 진해만에서 마비성 패도의 시공간적인 변화 특성 리 페이지진, 한지승, 손문호, 윤석현, 오석진
	PC-12	적조생물 성장단계에 따른 Reactive oxygen species(ROS) 생성 변화 방단비, 신성수, 이민지
	PC-13	뜸부기(<i>Silvetia siliquosa</i>) 실내 배양을 위한 최적 조건 규명 서지혜, 박세정, 한승엽, 최창근
	PC-14	부산 기장군 해역의 계절별 군집 구조 박세정, 한승엽, 서지혜, 홍성재, 이재호, 최창근
	PC-15	양식생물 <i>Pagrus major</i> 와 <i>Haliotis discus</i> 아가미의 적조 노출 분석 : ULtra Performance Liquid Chromatography를 이용하여 신성수, 방단비, 이민지
	PC-16	Phytoplankton community structure in the northeastern East China Sea (May and July 2023): Influence of longitudinal environmental gradients <u>Juhee Min</u> , Mi Rha Lee, Hee Kyung Lee, Jung Hyo Kang, Kwang Young Kim
	PC-17	Changes in growth, photosynthesis, toxins (OA and DTX) and genes by nutrient depletion in the dinoflagellate <i>Prorocentrum lima</i> <u>Jeonghwa Hwang</u> , Qikun Xing, Ji-Sook Park, Youngseok Han, Youn-Jung Kim, Jang K Kim
	PC-18	Assessment of the Carbon Sequestration Potential of Seaweed Aquaculture and Forests <u>Choi Ha min</u> , Park Ji-sook, Xing Qikun, Kim Jang Kyun
	PC-19	Mitigating river contamination and achieving cost-efficient biomass production through an Biomimetic algae mat <u>Junho Lee</u> , Haeseong Jeon, Yejin Kang, Haeun Lee, Dae Geun Kim



Poster Session (17:05–18:00)

Grand Ballroom (1F)

PC. Ecology

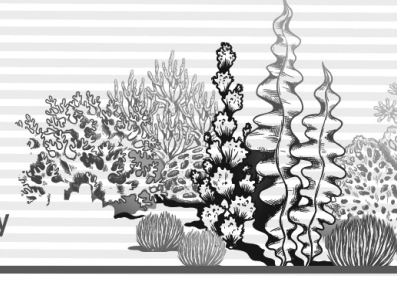
17:05–18:00	PC-20	Enhanced quantification of harmful protists using droplet digital PCR (ddPCR): a comparative study on filtration materials and their efficacy <u>Jimin Yoon</u> , Hari Lim, Juhee Min, Kwang Young Kim
	PC-21	A comparison of bioremediation capacity of <i>Chondrus ocellatus</i> , <i>Gracilaria vermiculophylla</i> and <i>Pyropia yezoensis</i> under different temperature and nutrient conditions <u>Sookkyung Shin</u> , Ji-Sook Park, Qikun Xing, Jang K. Kim
	PC-22	Effects of <i>Sargassum horneri</i> extract (SHE) and microbubbles on the growth of saltmarsh plants, <i>Salicornia europaea</i> and <i>Suaeda maritima</i> under different temperatures <u>YeJoon Seo</u> , Ji-Sook Park, Qikun Xing, Jangkyun Kim
	PC-23	Effects of vitamins on growth of the mixotrophic dinoflagellate <i>Heterocapsa rotundata</i> Yong Beom Choi, Sukyeon Lee, <u>Yeong Du Yoo</u>

Poster Session (17:05–18:00)

Grand Ballroom (1F)

PD. Bioengineering

17:05–18:00	PD-01	Isolation, identification, and biochemical characteristics of <i>Protosiphon botryoides</i> KNUA219 isolated from Dokdo Island <u>Hae-Seo No</u> , Yu-Hee Seo, Jeong-Mi Do, Bo-Seong Kim, Ho-Seong Suh, Jin-Won Lee, Ho-Sung Yoon
	PD-02	Current status of cryopreservation technology at the NNIBR <u>Young Soo Ryu</u> , Deok Hyeon Jin, Hyun Jin Kwon, Seung Won Nam
	PD-03	Enhancement of carbamazepine removal of <i>Tetrademus obliquus</i> KNUA061 by NaOCl and utilization of resulting biomass Jeong-Mi Do, Hee-Tae Yeo, <u>Ji Won Hong</u> , Ho-Sung Yoon
	PD-04	Effect of ishophloroglucin A isolated from <i>Ishige okamuræ</i> on <i>in vitro</i> osteoclastogenesis and osteoblastogenesis <u>Jisoo Kim</u> , Jung Up Park, Ji-Won Park, Haneul Kim, SongYi Han, Sori Kang, Kyoung Min Choi, WonWoo Lee
	PD-05	Anti-melanogenic effect of diphlorethohydroxycarmalol isolated from <i>Ishige okamuræ</i> via PKA/CREB and ERK-mediated MITF downregulation in B16F10 melanoma cells and zebrafish <u>Jung Up Park</u> , Ji-Won Park, Haneul Kim, Jisoo Kim, SongYi Han, Sori Kang, Kyoung Min Choi, WonWoo Lee
	PD-06	Ishophloroglucin A (IPA) from marine seaweed <i>Ishige okamuræ</i> inhibits adipocyte differentiation and lipid accumulation in 3T3-L1 cells <u>Ji-Won Park</u> , Jung Up Park, Haneul Kim, Jisoo Kim, SongYi Han, Sori Kang, Kyoung Min Choi, WonWoo Lee
	PD-07	Generating transgenic <i>Chlamydomonas</i> strain for functional studies of PUFA production-related gene in polar microalgae <u>Jeongha So</u> , Eun Jae Kim, Sanghee Kim, Sung Mi Cho
	PD-08	Cyanobacterial biomass : An eco-friendly energy resource and potential algal growth promoter <u>Woo Shik Jung</u> , Eun Hee Bae, Yoon-E Choi
	PD-09	Fabrication and cellular internalization of Spherical nucleic acids (SNAs) for microalgal biotechnology <u>Minwoo Lee</u> , Yoon-E Choi
	PD-10	Demonstration test of Al-based microalgal air-purification device of artificial tree type for carbon neutrality Z.H Kim, B.R. Son, Y.H. Kim, J.H. Seol, <u>M.K. Kim</u>



Chunhae Special Lecture		Grand Ballroom (1F)
CL-I		Chair: Han-Gil Choi
18:00-18:30	CL-01	김 육종연구 및 양식산업 현황 황미숙

Nov. 3. Friday

Plenary Lecture		Grand Ballroom (1F)
		Chair: Eun Kyoung Hwang
09:00-09:50	PL-02	WWF's US Office Perspective on Seaweed Farming as Climate Change Opportunity Paul Dobbins

Special Session I		Grand Ballroom (1F)
SS-I Seaweed for climate mitigation and the food of the future		Chair: Ji-sook Park and Jang Kyun Kim
10:10-10:25	SS I-01	Exploring the need for diverse species and markets in growing India's seaweed industry Gabiella D'Cruz
10:25-10:40	SS I-02	해조류 양식의 미래와 도전 허진석, 황은경, 김찬송, 이학중, 황미숙
10:40-10:55	SS I-03	바다숲 사업과 블루카본 강진우, 최용우, 김준호, 오지철, 성재은, 김주미
10:55-11:10	SS I-04	Do seaweed blooms sequester carbon? Ji-sook Park, Jeong Hwa Hwang, Na Young Lee, Hamin Choi, Qikun Xing, Jang Kyub Kim
11:10-11:25	SS I-05	The current status of seaweed industry and carbon sequestration potentials in Zanzibar, Tanzania Ali Rashid Hamad, Jang Kyun Kim

Special Session II		Sapphire I (2F)
SS-II 조류 대발생 연구 현황과 발전 방안		Chair: Jae Hwa Seo
10:10-10:25	SS II-01	Blooming mechanism of harmful cyanobacteria <i>Microcystis</i> Myung-Soo Han, Yoon-Ho Kang, Se Eun Kim, Jung Hyun Rho, Sangwoo Han
10:25-10:40	SS II-02	The distribution and investigation of genetic diversity on high-risk harmful cyanobacteria in freshwater Yoon-Ho Kang, Jaeyoon Lee, Sungae Yoon, Sangsuk Park, Mirinae Kim, Bo-Mi Lee, Yuna Shin, Kyunghyun Kim
10:40-10:55	SS II-03	Environmental microbiome researches on cyanobacterial bloom with ecosystem monitoring Eun Hee Bae, Bora Jang, Seonghyeon Gim, Young-Saeng Kim, Mi-Jung Bae, Byoung-Seok Kim, So-Yeon Kim
10:55-11:10	SS II-04	Genome information of algal bloom contributors YeongJun Jang, Jae-Shin Kang, Eun Hee Bae, JunMo Lee
11:10-11:25	SS II-05	Valorization of native cyanobacterial biomass: Unlocking potential for sustainable applications Woo Shik Jung, Jee Young Kim, Shin Myung Kim, Eun Hee Bae, Yoon-E Choi



Student Presentation IV
SO-IV

Sapphire II (2F)
Chair: Sookkyung Shin

10:10-10:25	SO IV-01	Changes of phytoplankton community and oceanic physicochemical properties of Jeju coast in spring and autumn, 2022 <u>Ji Yeon Jang</u> , Do Yun Jeong, Xu Wang, Su-Min Kang, Joon-Baek Lee, Jin Ho Kim
10:25-10:40	SO IV-02	발광다이오드 파장에 따른 <i>Chlorella vulgaris</i> 의 생장 및 생화학적 조성 변화 연구 한지승, 리페이진, 최태진, 오석진
10:40-10:55	SO IV-03	Effects of <i>Sargassum horneri</i> extract on the germination of the saltmarsh plants, <i>Suaeda maritima</i> and <i>Salicornia herbacea</i> <u>Nayoung Lee</u> , Ji-Sook Park, Qikun Xing, Youngcheol Park, Jangkyun Kim
10:55-11:10	SO IV-04	Genome analysis of <i>Cavernicolales</i> ord. nov., mesophilic Cyanidiophyceae lineage <u>Seung In Park</u> , Chung Hyun Cho, Yong Sung Lee, Hwan Su Yoon
11:10-11:25	SO IV-05	New <i>Dunaliella salina</i> strain containing high lutein content isolated in Korea <u>Khanh Nguyen</u> , Minjae Kim, Hyeonjun Oh, EonSeon Jin
11:25-11:40	SO IV-06	Timeline of photosynthetic stramenopiles reveals novel insights into the brown algal evolution <u>Seok-Wan Choi</u> , Louis Graf, Hiroshi Kawai, Chang Geun Choi, Hwan Su Yoon

Student Presentation V
SO-V

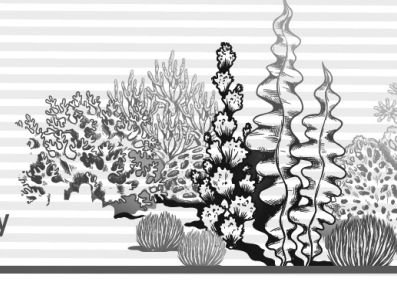
Sapphire III (2F)
Chair: Sinyang Kim

10:10-10:25	SO V-01	Multigene phylogeny using chloroplast genomes of the genus <i>Desmodesmus</i> (Scenedesmaceae) <u>YeongJun Jang</u> , HyeonShik Cho, JunMo Lee
10:25-10:40	SO V-02	Deducing the evolution and divergence of red algal genus <i>Ahnfeltia</i> (Florideophyceae, Rhodophyta) based on genomic evidence <u>Hocheol Kim</u> , Jihoon Jo, Hwan Su Yoon
10:40-10:55	SO V-03	Influence of temperature and photoperiod on the growth and reproduction of <i>Asparagopsis taxiformis</i> (Bonnemaisoniaceae, Rhodophyta) tetrasporophytes <u>Jae Woo Jung</u> , Yeseul Lee, Qikun Xing, Ji-Sook Park, Jang Kyun Kim
10:55-11:10	SO V-04	칼슘 매개 활성산소종 신호에 의해 조절되는 해산 홍조식물 <i>Griffithsia monilis</i> 의 세포재건 홍찬영, 김광훈
11:10-11:25	SO V-05	Qualitative and quantitative assessment of diatom deformities and protoplasmic condition under metal and metalloid stress Jihae Park, <u>Sudeeksha Negi</u> , Hojun Lee, Taejun Han, Lalit Pandey

Contributed Papers II
CO-II

Grand Ballroom (1F)
Chair: Jun Mo Lee

11:25-11:40	CO II-01	Unlocking a New Sexual System: Genomic Introgression in the Algal Genus <i>Vaucheria</i> <u>Jihoon Jo</u> , Seok-Wan Choi, Minho Seo, Hwan Su Yoon
11:40-11:55	CO II-02	Molecular phylogeny and genetic diversity of the economic seaweed <i>Meristotheca papulosa</i> (Gigartinales, Rhodophyta) in the northwest Pacific, with a description of <i>M. pilulaora</i> sp. nov. <u>Mi Yeon Yang</u> , Jeong Chan Kang, Daisuke Fujita, Myung Sook Kim



Contributed Papers III Sapphire II (2F)
CO-III Chair: Suk Jin Oh

11:25-11:40	CO III-01	Introduced subtropical ship hull seaweed, <i>Colaconema formosanum</i> (Rhodophyta): species description and ecophysiological characterization <u>Hyung Woo Lee</u> , Ye Rim Kim, Ju-Hyoung Ki*, Young Jun Song, Young Sik Kim, Eun Ju Kang, Min Gui Jung, Kyungsoon Shin, Jung-Hoon Kang, Seung Ho Back, Bonggil Hyun
11:40-11:55	CO III-02	해양생물 종목록을 활용한 국가 해양생물 종 보존 관리 방안 김주희, 정현경, 광민석

Contributed Papers IV Sapphire III (2F)
CO-IV Chair: Sinyang Kim

11:25-11:40	CO IV-01	한국의 남해 거문도 암반조하대의 수심별 해조류의 분포: 조사기법에 따른 장·단점의 분석 배종일, 황성일, 한상조, 성봉준, 전병현
11:40-11:55	CO IV-02	Hidden diversity of snow algal community in Barton Peninsula, Antarctica <u>Sung Mi Cho</u> , Jeongha So, Jong Hee Kim, Kye Chung Park, Sanghee Kim

Special Session III Grand Ballroom (1F)
SS-III Algae cell signaling and genomics Chair: Gwang Hoon Kim and Chikako Nagasato

13:30-13:45	SS III-01	Phenotyping a knockout mutant of alginate synthesis candidate gene in male gametophytes of <i>Saccharina japonica</i> <u>Chikako Nagasato</u> , Yuan Shen, Rina Yonamine, Cécile Hervé, Yacine Badis, Taizo Motomura
13:45-14:00	SS III-02	Unicellular and multicellular developmental variations of zygotes cause a life cycle variation in <i>Monostroma angicava</i> (Ulotrichales, Ulvophyceae) <u>Yusuke Horinouchi</u>
14:00-14:15	SS III-03	Ca ²⁺ signaling during fertilization in the red alga <i>Bostrychia moritziana</i> : the role of calcium-dependent kinases <u>Eunyoung Shim</u> , Giuseppe C Zuccarello, Hana Park, Gwang Hoon Kim
14:15-14:30	SS III-04	ROS signaling in red algae <u>Gwang Hoon Kim</u>

Special Session IV Sapphire I (2F)
SS-IV 담수 미세조류 계통분류 및 유용성 연구 Chair: Chang Soo Lee and Ji Hwan Kim

13:30-13:45	SS IV-01	Valuable information on nutrient and pigment content to improve the utilization of freshwater microalgae biological resources <u>이창수</u> , 김지환, 양혜원, 조복연, 김유호, 이미옥
13:45-14:00	SS IV-02	담수 미세조류 <i>Chlorella sorokiniana</i> 유래 2차 대사산물의 생리활성 연구 김진우, 김소희, 박하영, 강민호, 박정은
14:00-14:15	SS IV-03	담수 미세조류에 의한 우포늪 퇴적환경의 탄소 저장량 규명 연구 이상득, 박재홍, 이병준, 이진영, 이호일, 구민화, 이창수, 권대률, 박미례
14:15-14:30	SS IV-04	국내 녹조류와 남세균의 형태적 정보 및 분류학적 연구 <u>이옥민</u> , 이남주, 김도현, 송지호, 김소원, 이창수
14:30-14:45	SS IV-05	Taxonomic reinvestigation of the genus <i>Tetradesmus</i> (Scenedesmaceae family) <u>JunMo Lee</u>
14:45-15:00	SS IV-06	엽록체 다유전자 (<i>atpB</i> , <i>petA</i> , <i>rbcL</i> & <i>tufA</i>) 분석을 통한 우리나라 <i>Desmodesmus</i> 속 녹조류의 계통 <u>양은찬</u> , 유영채, 이남주, 이옥민



Special Session V

SS-V 연안생태계 복원성과 및 활용방안

Sapphire II (2F)

Chair: Chang Geun Choi

13:30-13:45	SS V-01	Estimating Net Primary Production of Seaweed Using the Photo-Respirometry Method <u>Ju-Hyoung Kim</u> , <u>Cheol-Woo Kwak</u> , <u>Eun Ju Kang</u> , <u>Hyung Woo Lee</u> , <u>Ye Rim Kim</u>
13:45-14:00	SS V-02	먹이망 분석기법을 활용한 바다숲 사업의 효과분석 연구 <u>김경률</u> , <u>최임호</u> , <u>박경현</u> , <u>장옥진</u> , <u>백근욱</u>
14:00-14:15	SS V-03	초분광 영상분석에 의한 한국연안의 갯녹음 현황 <u>김성학</u> , <u>오지철</u> , <u>최용우</u> , <u>김익재</u>
14:15-14:30	SS V-04	제주 바다숲 할망바당 조성해역 해조천이 모니터링 <u>한은규</u> , <u>좌용현</u> , <u>김만철</u> , <u>박수정</u> , <u>윤도홍</u> , <u>한용재</u> , <u>최재영</u>
14:30-14:45	SS V-05	잘피 종자 춘화처리·관리방법별 발아율 실험을 통한 잘피 발아 조건 연구 <u>안동영</u> , <u>김태후</u> , <u>심창명</u> , <u>박용우</u> , <u>하승연</u> , <u>양정규</u> , <u>오지철</u> , <u>박상언</u>

Contributed Papers V

CO-V

Sapphire III (2F)

Chair: Tae Oh Cho

13:30-13:45	CO V-01	Phase Shift in Vertical Distribution of Macroalgal Assemblages on Udo Islet, Jeju, Korea, After a Decade of Revisiting <u>Jeong Chan Kang</u> , <u>Hyung Woo Lee</u> , <u>Young Wook Ko</u> , <u>Myung Sook Kim</u>
13:45-14:00	CO V-02	Effect of air exposure on the germination rate of surfgrasses, <i>Phyllospadix japonicus</i> and <i>P. iwatensis</i> seeds <u>Jung-Im Park</u> , <u>Jong Il Bai</u> , <u>Sung Il Hwang</u>
14:00-14:15	CO V-03	The BPL2, mannose-binding lectin from <i>Bryopsis plumosa</i> , a promising candidate for an antitumor agent <u>Jong Won Han</u> , <u>Jei Ha Lee</u> , <u>Heabin Kim</u>
14:15-14:30	CO V-04	Optimization study of Cryopreservation factors for <i>Chlamydomonas debaryana</i> <u>Seung Won Nam</u> , <u>Young Soo Ryu</u> , <u>Deok Hyeon Jin</u> , <u>Hyun Jin Kwon</u>